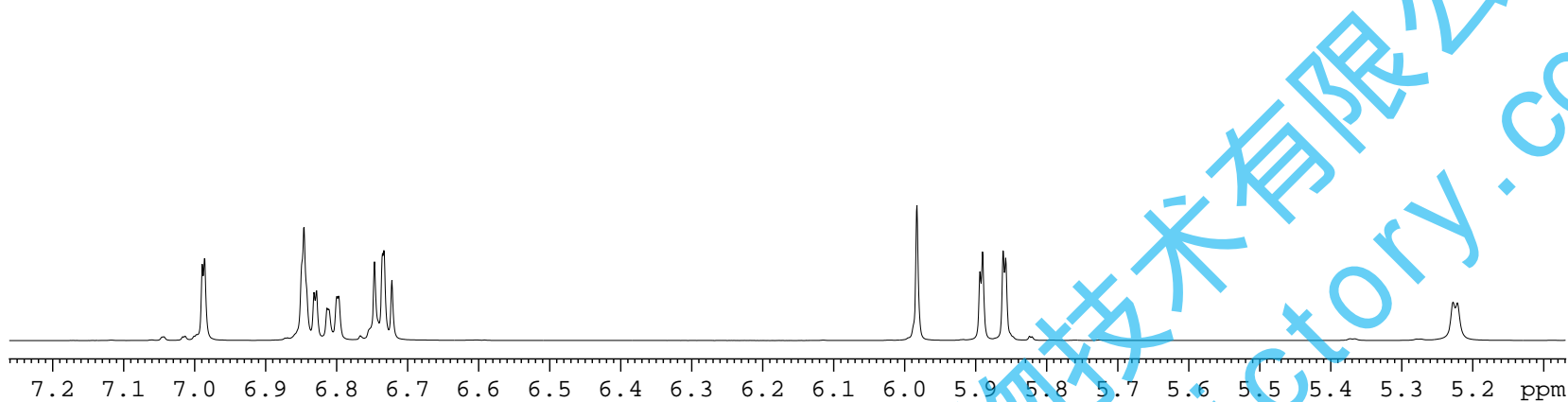


6.989
6.986
6.846
6.832
6.829
6.814
6.811
6.800
6.797
6.747
6.735
6.734
6.722

5.983
5.894
5.891
5.861
5.858

5.228
5.222



NAME	A1
EXPNO	1
PROCNO	1
.	
INSTRUM	spect
PROBHD	5 mm PABBO BB-
PULPROG	zg30
TD	65536
SOLVENT	DMSO
NS	64
DS	2
SWH	12335.526 Hz
FIDRES	0.188225 Hz
AQ	2.6564426 sec
RG	80.6
DW	40.533 usec
DE	6.50 usec
TE	294.4 K
D1	1.00000000 sec
TD0	1

1.01
2.20
1.05
2.21

1.09
1.00
1.10

1.04

5.228
5.222

4.990
4.982

4.570
4.556

4.220
4.215

3.856
3.841
3.837

3.461
3.450
3.438
3.424

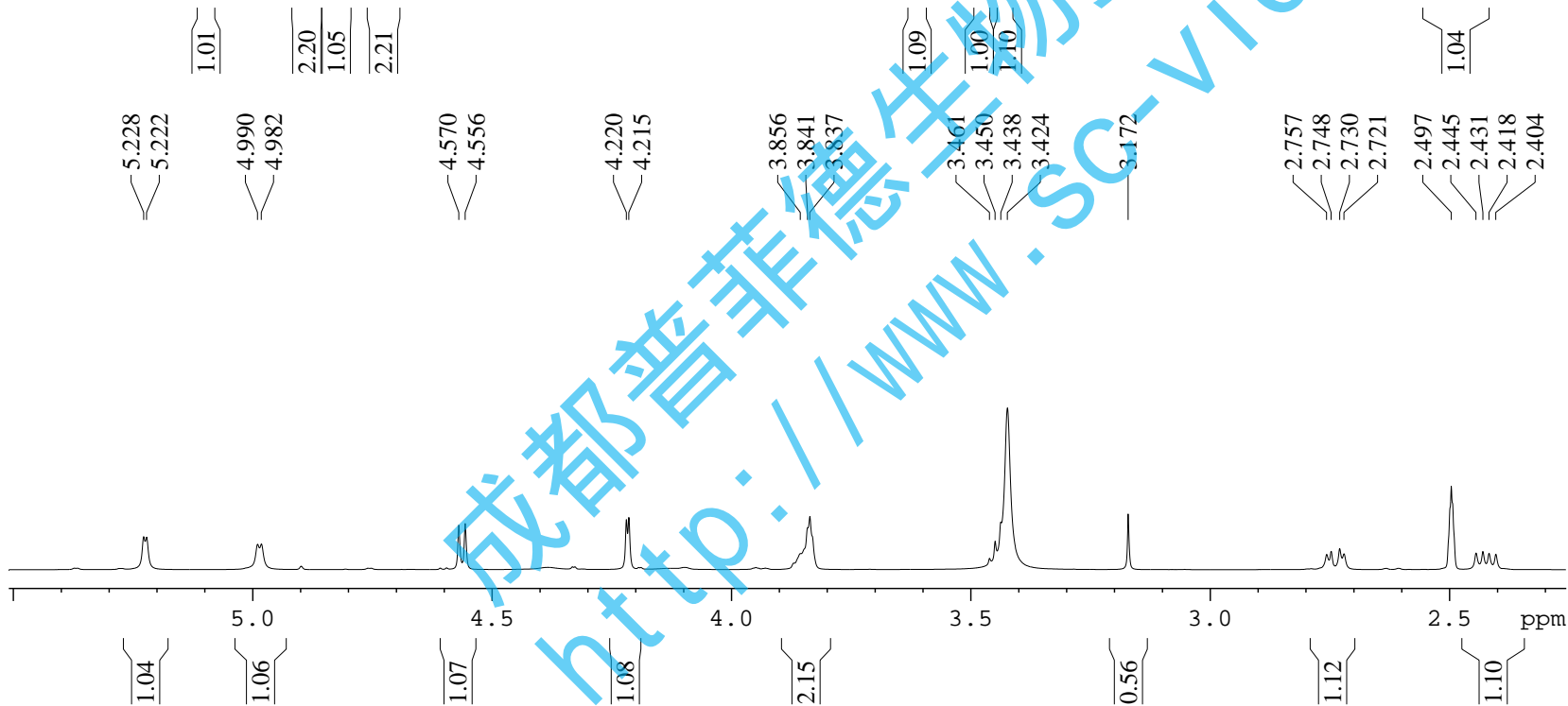
3.172

2.757
2.748
2.730
2.721

2.497
2.445
2.431
2.418
2.404

==== CHANNEL f1 =====

NUC1	1H
P1	13.32 usec
PL1	-0.80 dB
PL1W	12.89519405 W
SFO1	600.1937064 MHz
SI	32768
SF	600.1900062 MHz
WDW	EM
SSB	0
LB	0.30 Hz
GB	0
PC	1.00



1.04

1.06

1.07

1.08

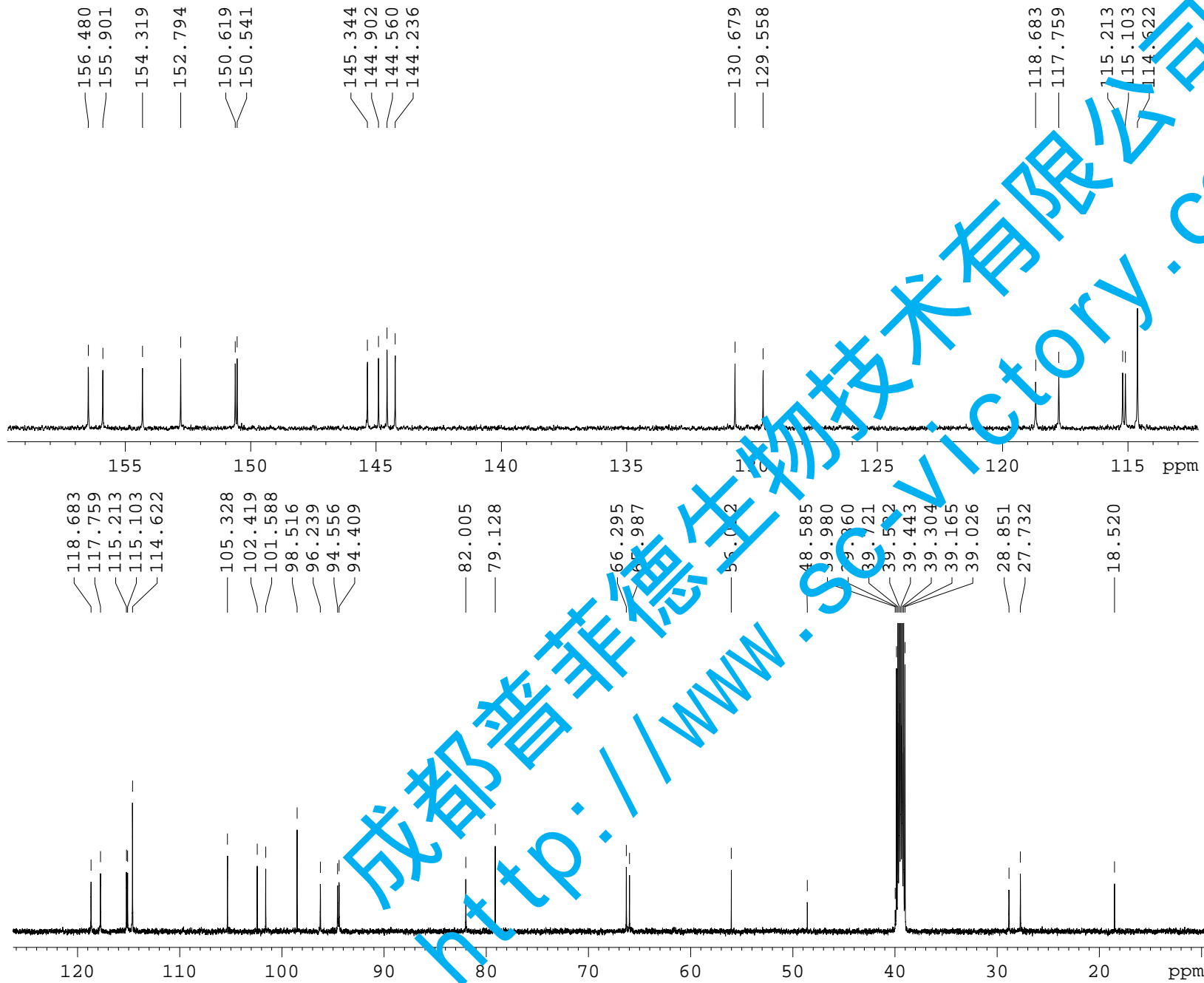
2.15

0.56

1.12

1.10

成都普菲德生物技术有限公司
http://www.sc-victory.com



```

NAME           A1
EXPNO          2
PROCNO         1

INSTRUM        spect
PROBHD         5 mm PABBO BB-
PULPROG        zgpg30
TD             65536
SOLVENT        DMSO
NS             1024
DS             4
SWH            36057.691 Hz
FIDRES         0.550197 Hz
AQ             0.9088159 sec
RG             2050
DW             13.867 usec
DE             6.50 usec
TE             297.1 K
D1             2.0000000 sec
D11            0.03000000 sec
TD0            1
  
```

```

===== CHANNEL f1 =====
NUC1            13C
P1              11.45 usec
PL1             -0.60 dB
PL1W            103.82513428 W
SFO1            150.9329873 MHz
  
```

```

===== CHANNEL f2 =====
CPDPRG2        waltz16
NUC2            1H
PCPD2          70.00 usec
PL2            -0.80 dB
PL12           13.61 dB
PL13           13.43 dB
PL2W           12.89519405 W
PL12W          0.46711940 W
PL13W          0.48688662 W
SFO2           600.1924008 MHz
SI             32768
SF             150.9179715 MHz
WDW            EM
SSB            0
LB             1.00 Hz
GB             0
PC             1.40
  
```